

**IN VITRO TRANSPOSITION OF ISY100,
A BACTERIAL INSERTION SEQUENCE BELONGING
TO THE Tc1/MARINER FAMILY**

Xiaofeng Feng and Sean D. Colloms*

Institute of Biomedical and Life Sciences,
Division of Molecular Genetics,
University of Glasgow,
Anderson College,
56 Dumbarton Rd,
Glasgow G11 6NU,
Scotland UK.

* Corresponding author

Supplementary material

Fig. S1

Fig. S2

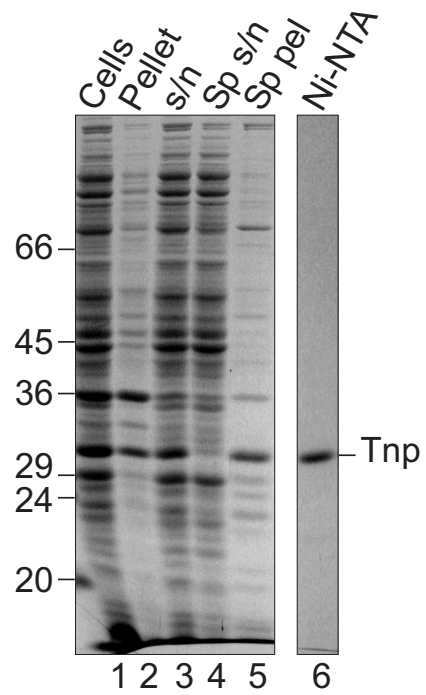


Fig. S1. Transposase with a C-terminal 6-His tag was over-expressed in *E. coli* and purified by spermine precipitation and metal ion affinity chromatography. Lane 1, whole cells; Lane 2, sonication pellet; Lane 3, sonication supernatant; Lane 4, spermine supernatant; Lane 5, spermine pellet; Lane 6, purified transposase eluted from Ni-NTA with 200 mM imidazole.

References:

Biegert, A., Mayer, C., Remmert, M., Soding, J., and Lupas, A.N. (2006) The MPI Bioinformatics Toolkit for protein sequence analysis. *Nucleic Acids Res* **34**: W335-339.

Cuff, J.A., and Barton, G.J. (2000) Application of multiple sequence alignment profiles to improve protein secondary structure prediction. *Proteins* **40**: 502-511.

DeLano, W.L. (2002) The PyMOL Molecular Graphics System. <http://www.pymol.org>.

Dodd, I.B., and Egan, J.B. (1990) Improved detection of helix-turn-helix DNA-binding motifs in protein sequences. *Nucleic Acids Res* **18**: 5019-5026.

Edgar, R.C. (2004) MUSCLE: multiple sequence alignment with high accuracy and high throughput. *Nucleic Acids Res* **32**: 1792-1797.

Soding, J., Biegert, A., and Lupas, A.N. (2005) The HHpred interactive server for protein homology detection and structure prediction. *Nucleic Acids Res* **33**: W244-248.

Watkins, S., van Pouderooyen, G., and Sixma, T.K. (2004) Structural analysis of the bipartite DNA-binding domain of Tc3 transposase bound to transposon DNA. *Nucleic Acids Res* **32**: 4306-4312.